

# RADIAL FAN

## RFE 120 M

KU 7700123, UU 7700125, KR 7700295

- Single-phase single inlet radial fan.
- Compact with high capacity and efficiency.
- Low sound levels.
- Impeller with forward curved blades.
- The external rotor motor has maintenance-free sealed ball-bearings.
- The motor is situated in the airstream to get ultimate cooling.
- Integrated motor protection.
- Junction box has enclosure class IP 54.
- For speed control a transformer or electronic speed controller can be connected.
- Fan housing is manufactured from galvanized sheet steel.
- Ideal for use in heat exchangers, dehumidifiers and air cleaners.
- Explanations:  
KR = With junction box, with connection pipes.  
KU = With junction box, without connection pipes.  
UU = Without junction box, without connection pipes.
- All diagrams shown with duct connected fan.



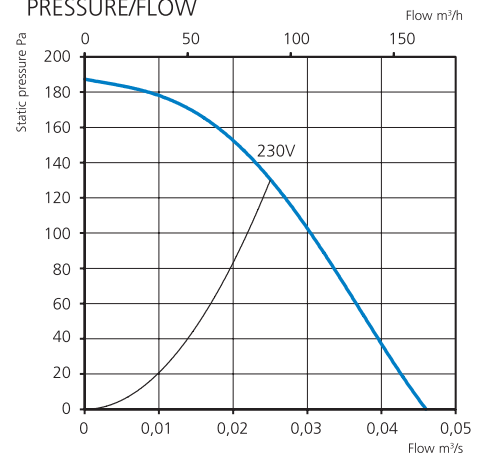
### ACCESSORIES

- Outlet flange
- Mounting clamp MK 125
- Safety grille BSV 125
- Safety grille BSR 125
- Back draught shutter RSK 125
- Louvre YG 125
- Silencer LDC 125
- Transformer controller VRTE C
- Transformer controller VRDE 1.5
- Speed controller VRS 0.5

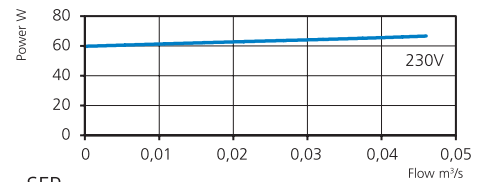
### TECHNICAL DATA

<b>Voltage</b>	230 V
<b>Frequency</b>	50 Hz
<b>Phase</b>	1 ~
<b>Current</b>	0.29 A
<b>Power</b>	67 W
<b>Speed</b>	1510 r.p.m.
<b>Max. temp of transported air</b>	75 °C
<b>Sound pressure level, 3 m</b>	53 dB(A)
<b>Weight</b>	2.0 kg
<b>Enclosure class</b>	44 IP
<b>Wiring diagram</b>	4040001

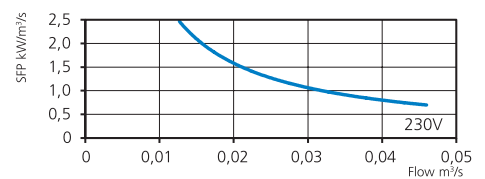
### PRESSURE/FLOW



### POWER/FLOW



### SFP



### SOUND DATA

	$L_{WA}$ tot dB (A)	63	125	250	500	1K	2K	4K	8K
<b>Surrounding 230 V</b>	60	32	38	48	57	54	51	51	45
<b>Outlet 230 V</b>	67	57	56	60	64	59	52	50	45
<b>Inlet 230 V</b>	66	54	56	62	61	53	48	48	40

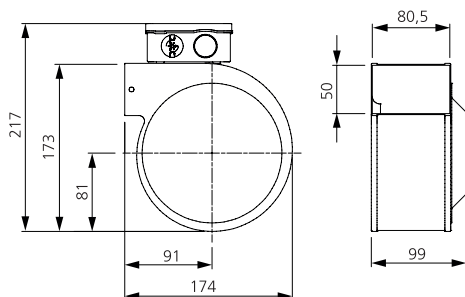
### MORE INFORMATION



Find out the latest updated information about this product by visiting [www.ostberg.com](http://www.ostberg.com) or scanning this QR code.

### DIMENSIONS

**KU** ← (mm)



**KR** ← (mm)

