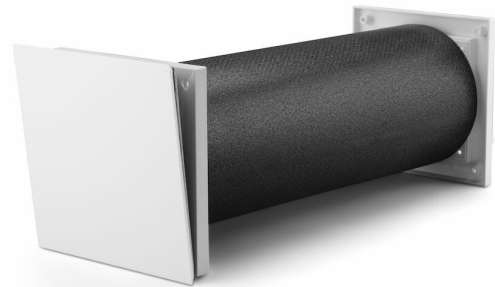


# Fresh

## Wall vent TL80DE dBs

Cat. Part Number 629087

- Discreet design • Thick condensation protection • Weatherproof • Easy to maintain • Energy-saving stormproofing • Sound-absorbent • Multiple filter options



**TL80DE dBs is a complete noise-reducing vent consisting of a noise-reducing lead-through pipe and external grille. An excellent choice for anyone disturbed by outside noise. The noise-reducing pipe can be easily cut to the right length using a snap-off knife.**

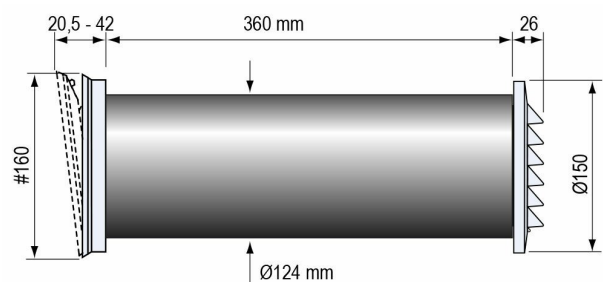
### Functions

Condensation protection, Filter, Stormprotection, Noise reduction

### Tecnical data

Installation type, wall, ceiling etc	Exterior wall
Duct size nominal Ø (mm)	80
Duct Length	360
Unpackaged Product Width (mm)	160
Unpackaged Product Height (mm)	160
Unpackaged Product Depth (mm)	428
Material	Plastic
Plastic Material detail	ABS
Etim Code	EC011497

### Meassure sketch/CAD



## Description

### General:

Wall vent with a very discreet design. The front piece can be wallpapered or painted. The vent is equipped with thick condensation insulation, over-ventilation protection, stormproofing and filter. The stormproofing prevents energy loss through the impact of wind. Airflow is regulated with the front piece, which has a mechanism for changing the opening angle. The front piece is opened at the top edge and forces the air upwards, which provides a comfortable distribution pattern even when underfloor heating is used.

### Sound reducing wall vent:

Wall vent TL80DE dBs consists of a sound reducing pipe instead of a standard wall pipe. The sound reducing pipe can be easily cut to the right length using a snap-off knife. Standard pipe length 360 mm.

### Internal vent part:

The internal vent part has thick condensation insulation, a Standard filter (dust/insect) and a front piece that is angled up at the top edge to adjust the flow. The filter is installed in a filter cartridge, which is equipped with a guard to protect against running water. The front piece has four opening positions for varying the airflow. The distribution pattern has been carefully developed to suit underfloor

heating systems. The vent releases the air upwards and to the sides. Mixture with room air is very effective. Cooled air reaches a comfortable temperature just a few decimetres from the vent.

### Installation/positioning:

The vent should be positioned high up on the wall. If there is a radiator, it is best to try to position the vent above this. With this positioning, you utilise the convection flow and achieve the best comfort level. The vent is excellent for use with underfloor heating as it was specially designed for this.

### Operation/maintenance:

To ensure good air quality and maintained airflow, the filter should be cleaned/replaced 1–2 times a year. The standard filter can be washed in a mild soap solution. The Pollen and Flimmer filters must be replaced. The filter is installed in a filter cartridge behind the front piece. It is easily removed by releasing the front from the lower attachments and then lifting it up. Pull the filter cartridge straight out from the vent chassis.

### Accessories:

A complete series of accessories is available for the vent for further flexibility.

## Accessories



**Flimmerfilter  
D94**

Cat 423778



**Grille Tyfon  
weatherproof  
Ø180 white**

Cat 910011



**Filter TL-D  
standard 3-pcs**

Cat 903286



**Filter TL-D  
pollen 3-pcs**

Cat 903288



**Chuck D32-210**

Cat 804046



**Chuck  
extender D32-  
210**

Cat 804048



**Hole saw D127**

Cat 804044



**External grille  
#150 black**

Cat 181706



**External grille  
#150 röd**

Cat 181705



**External grille  
#150 grey**

Cat 181707



**Insect net 150  
DIY**

Cat 664004



**Grille Tyfon  
weatherproof  
D180 Grey**

Cat 910012



**External grille  
#150 brun**

Cat 181703



**Pipe dB  
D81/98X500**

Cat 858150



**External grille  
#150 gul**

Cat 181708



**Cover plate 18  
white #180**

Cat 661811



**Storm cover  
T#170 D81  
unvarnished  
aluzink**

Cat 663037