

# WORKPLACE DESIGN



GEOVENT delivers customized welding booths, welding walls/shielding and noise damping for welding stations. It can be simple walls of different types of sheets provided with curtains or more advanced walls with roof and a center column for the transfer of gases, electricity and ventilation.

If noise reduction is required, the cabinets are delivered in a modular, sandwich panel system with smooth or perforated outer- and inner panels and Rockwool in between. (Fiber cloth retains the Rockwool)

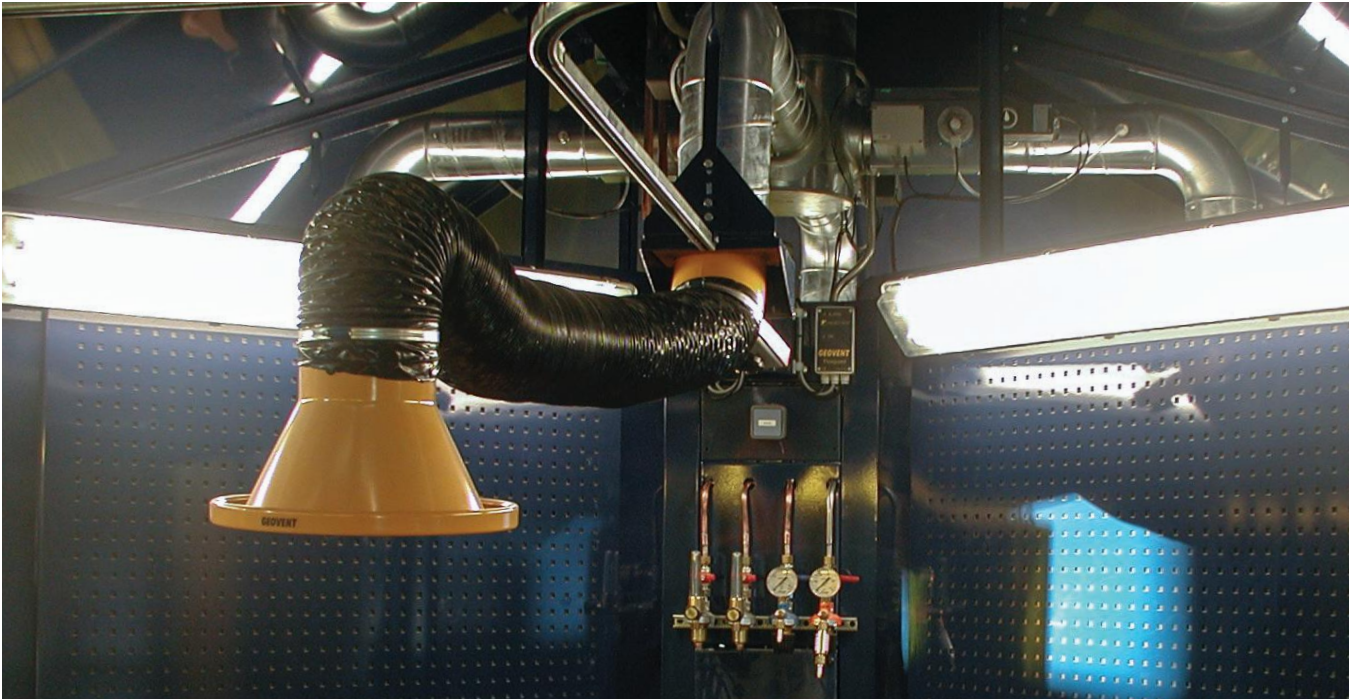
The panels are available in several sizes and designs and they are used for encapsulation of noisy machines, firewalls, paint booths, office rooms and for welding and grinding booths in industry or technical schools.

Contact Geovent for information on prices and options.



Complete construction of technical school with welding cabins and welding station.

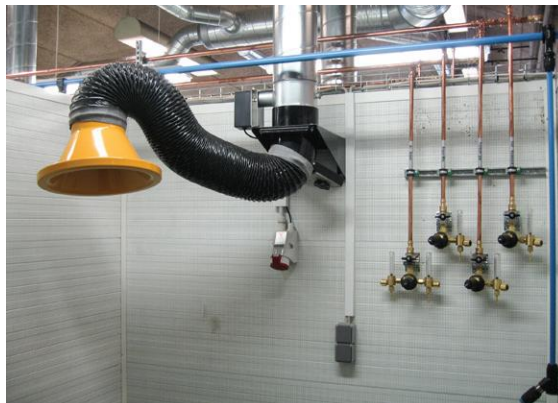




Examples of welding booths from GEOVENT. Custom center column with various outlets for gas, power and extraction.

Sound/ welding cabins are used for many purposes. The primary is to define the work area, while co-workers are protected from light and noise. The cabins are always custom made and designed for the specific job.

We have extensive experience from previous projects, so use us as a competent partner for your next project.



## Welding booths

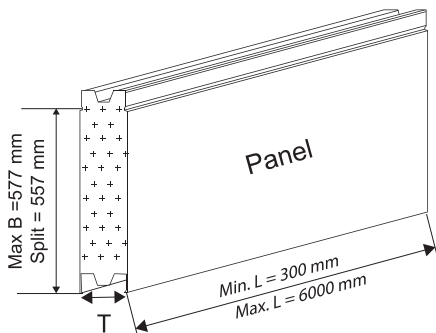


Art. No.	Description
Panel Outside/Inside	
01-303	Geo-Dan 30 Perf/Perf, 50 mm, pr. m <sup>2</sup>
01-304	Geo-Dan 60 Perf/Perf, 100 mm, pr. m <sup>2</sup>
01-305	Geo-Dan 30 PO/PO, 50 mm, pr. m <sup>2</sup>
01-306	Geo-Dan 60 PO/PO, 100 mm, pr. m <sup>2</sup>
01-307	Geo-Dan 30 PO/Perf, 50 mm, pr. m <sup>2</sup>
01-308	Geo-Dan 60 PO/Perf, 100 mm, pr. m <sup>2</sup>

U-rail for panel assembly	
01-309	U-rail, PO 50 mm, per meter
01-310	U-rail, PO 100 mm, per meter

Use one U-rail all the way around each wall (standard sizes)

## Panels for welding booths and noise damping



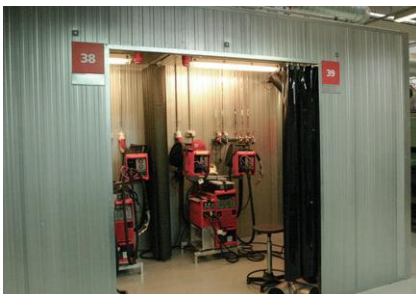
Geo-Dan sandwich built elements with 0,6 mm galvanised and powder coated steel sheet metal on both sides. The panels have a mineral wool core. Thicknesses: 50 and 100 mm with smooth powder coated (PO) or perforated, powder coated sheet metal. (Perf). Geo-Dan are assembled with snap lock and sealing. The panels are approved for use as fire wall according to Danish standards.

Silver (RAL 9006) by default but available in other RAL colours.



	Thickness	Heat loss	Width	Weight
Geo-Dan 30	50 mm	0,67 W/m <sup>2</sup>	557 mm	19,0 kg/m <sup>2</sup>
Geo-Dan 60	100 mm	0,34 W/m <sup>2</sup>	557 mm	26,1 kg/m <sup>2</sup>

The holes, is by standard, 1/3 part of the plate.



Noise reduction in dB(A) ± 3								
Panels outside/inside	Hz	63	125	250	500	1000	2000	4000
Geo-Dan 30 PO/PO	dB(A)	21	25	29	32	36	38	42
Geo-Dan 60 PO/PO	dB(A)	28	30	32	36	39	44	49
Geo-Dan 30 PO/Perf	dB(A)	17	20	20	24	25	27	32
Geo-Dan 60 PO/Perf	dB(A)	23	22	22	29	29	32	39

## Accessories for welding booths

- Extra insulation to avoid thermal bridges.
- U-rails for combining several panels.
- V-rails inside and outside for extra finish.
- Windows and doors.
- Curtain and rails and more.

Please enquire for more information on drawings, prices and special requests.

## Welding curtain (translucent)



By default the curtain is green. Other colours on request.  
Standard sizes shown, special sizes on request. Soft but tough quality.

Art. No.	Description
01-320	Welding curtain 180 x 130 cm
01-322	Welding curtain 180 x 180 cm
01-328	Velcro connection 180 cm
01-325	Other sizes – per m <sup>2</sup> . min. 10 m <sup>2</sup> per curtain. Add 10% for horizontally

## Brackets and suspension



Art. No.	Description
01-340	C-rail 42x50 mm Lengths of 7m
07-828	Connector w. grub screws for 2 lengths of C-rail 42x50 mm
01-342	Arch 600 mm 42x50 mm profile
01-343	Curtain roller with hook for C-profile 42x50 mm
01-345	Rail stop
01-350A	Wall bracket for 42x50 C-profile
07-817	Ceiling bracket w. adjustment tread. Bolt M12x60 mm. Use with 01-351
01-351	Wall bracket for wall mounting

### Mounting of pipes

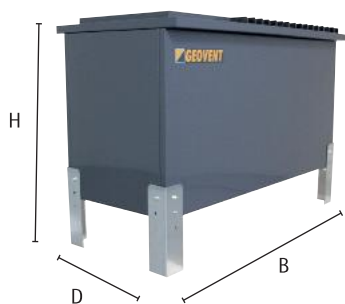


01-335	S-hook, galvanized 4,2x45 mm
01-335A	Curtain hook (drop shaped). Ø42 mm, l=72 mm

01-354	Welding curtain stand 200 x 180 cm. Curtain included
01-354A	Welding curtain stand 200 x 360 cm. Curtain included



## Welding table - down draft



Art. No.	Description
02-001	Welding table - 600x600x800 mm (WxDxH) Air flow needed: ca. 1.500m <sup>3</sup> /h - connector: ø200 mm
02-002	Welding table - 900x600x800 mm (WxDxH) Air flow needed: ca. 2.000m <sup>3</sup> /h - connector: ø200 mm
02-003	Welding table - 1.200x600x800 mm (WxDxH) Air flow needed: ca. 2.500m <sup>3</sup> /h - connector: ø250 mm
02-005	Welding table - 1.800x1.000x800 mm (WxDxH) Air flow needed: ca. 6.000m <sup>3</sup> /h - connector: ø315 mm
02-006	Welding table - 2.500x800x800 mm (WxDxH) Air flow needed: ca. 6.500m <sup>3</sup> /h - connector: 2xø315 mm (in both ends of the table)

Welding- and grinding tables can be specially designed. Contact us for more details.

## Backdraft extraction



Art. No.	Description
02-030	Backdraft extraction - 900x185x750 mm (WxDxH) Air flow needed: app. 1.000 - 1.500 m <sup>3</sup> /h - connector: ø200 mm with collection drawer
02-037	Corner console for Backdraft extraction
02-039	Bracket for mounting backdraft extraction on welding table (set of 4 pcs.)
02-043	Side- and backdraft panel for welding table 1.800x1.000x800 mm



02-043 Side- and backdraft panel



## Smoking cabin



Smoking cabin specially designed for use offshore and on board ships. Withstands vibrations. With EC-fans and push/pull-system. The air is filtered 99,9% through EU5, activated carbon and Hepa filters, and is recirculated. Light and fan activated using sensor. Capacity: 350m<sup>3</sup>/h, 1x230V 50Hz, Consumption: 175W/1,3A, 45dB(A), HxWxD: 2000x1200x1000mm

Art. No.	Description
02-100	Smoking cabin
15-499	Pre-filter for smoking cabin
15-500	Hepa filter 610-305
15-501	Activated carbon filter H13 1500

## Spray booth



Spray booth, B = 1400 mm

Spray booth for smaller items. With light, Andraee-filter, wheels and drip tray. Galvanized. Recommended airflow: 2.000 m<sup>3</sup>/h, connector ø250 mm. 230V. H: 2035 mm W: 1000 mm D: 1000 mm

Art. No.	Description
01-800	Spray booth, W=1.000 mm - 2.000 m <sup>3</sup> /h
01-801	Spray booth, W=1.400 mm - 2.800 m <sup>3</sup> /h
01-802	Spray booth, W=1.800 mm - 3.600 m <sup>3</sup> /h



Andraee-filter for spray booth

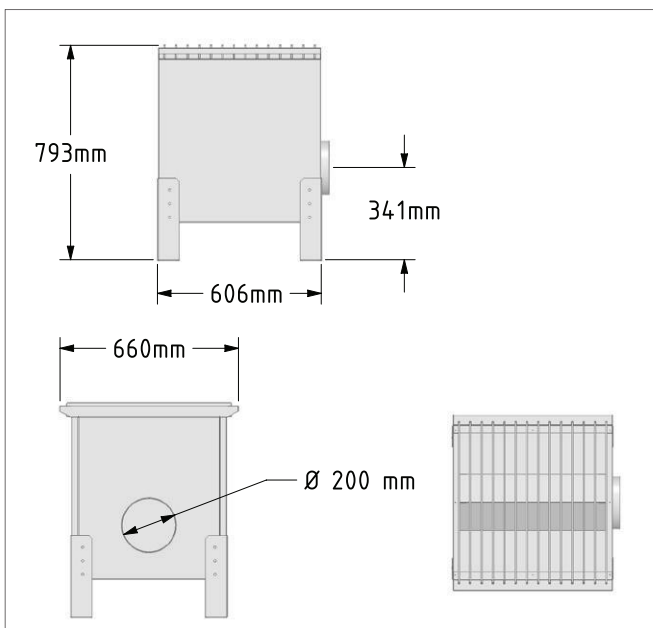
# WELDING TABLE



Customized table



Geovent solves many customer specified requests. In the pictures on the left, you see a grinding table with rubber mats. Table size above is 2.5 x 1.25 m with vacuum in table/ rear a particle trap.



02-001 Welding table



Above, standard table. Lamels are easy to move or changed if needed. Rubber mat can be order.